

DURA-LIFE™
Twice The Life Filter Bags



121FS10 Pulse Jet Baghouse Dust Collector
with integrated fan, silencer and dumpster discharge



25FS8 Bin Vent
with integrated fan

Economical solutions for dust collection and bin venting applications.

- Side bag filter removal allows for installation in low headroom applications
- All-welded construction provides increased durability and air/water integrity
- Integral fan option up to 75 hp helps to reduce space requirements
- Unique cleaning system minimizes moisture and particulate issues in pulse valves
- Collectors with up to 225 bag filters require only one dirty air inlet, one clean air outlet, and one hopper, resulting in reduced ducting and hopper outlet costs

DURA-LIFE™ BAG FILTERS — A BREAKTHROUGH FOR BAG USERS.

Dura-Life™ polyester bag filter media is engineered with a unique hydroentanglement process that uses water to blend the fibers, which creates a filter bag that has smaller pores, better surface loading and better cleaning. For this reason, Dura-Life™ bag filters provide:

- Two to three times longer bag filter life
- Reduced maintenance and replacement bag filter costs due to fewer bag changeouts
- Fan energy savings due to lower pressure drop
- Thirty percent fewer emissions based on EPA tests



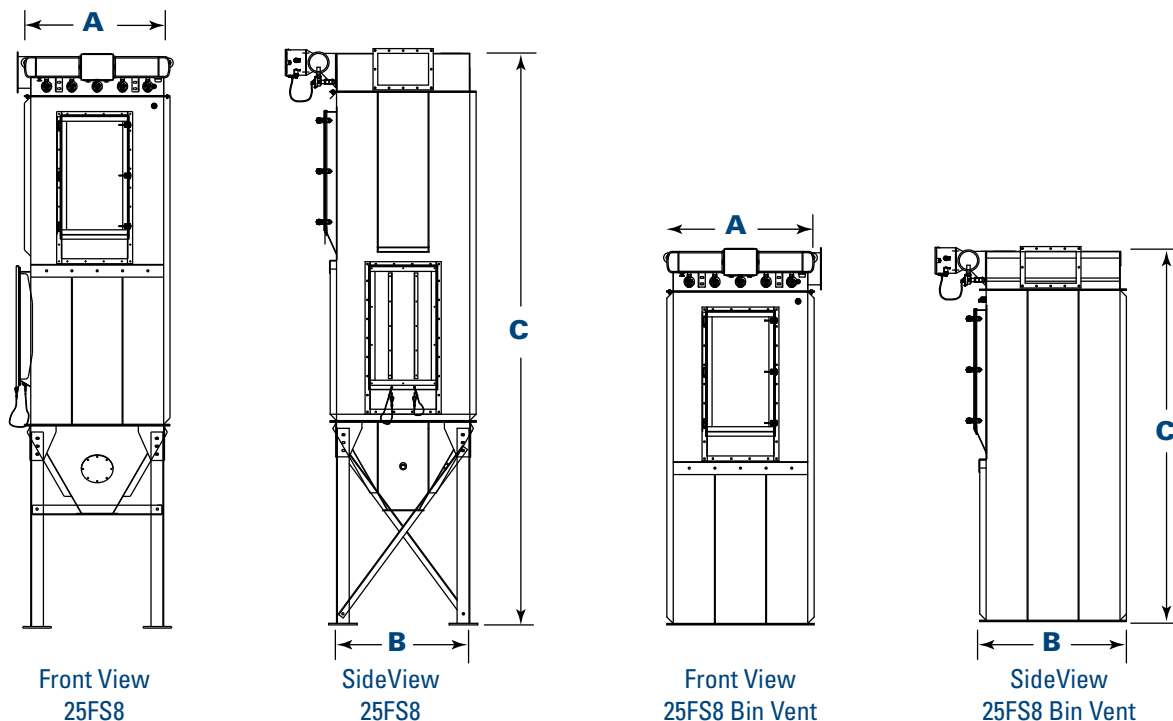
Dura-Life™ Bag-Clean Air Side
(300x)



Polyester Bag-Clean Air Side
(300x)

These photos were taken with a scanning electron microscope of bag media used in a collector that was filtering fly ash. The bags were removed after 2,700 hours of use. Air-to-media ratio was 4.5 to 1. Pressure drop after 2,700 hours of operation was 6 inches (152.4 millimeters) on polyester bags and 2 inches (50.8 millimeters) on Dura-Life™.

DIMENSIONS & SPECIFICATIONS



STANDARD FEATURES & EQUIPMENT OPTIONS

Collector Design	Std	Opt
Side Bag Removal	X	
All-Welded, Carbon Steel Construction, 12 Gauge	X	
Rated 17-inch (431.8-Millimeter) Water Gauge	X	
Compressed Air Manifold with Drain	X	
Flanged Clean Air Outlet	X	
High Performance Venturis	X	
Easy-Lift Lifting Ears	X	
Integrated Exhaust Weatherhood		X
Service Platform and Ladder		X
Stainless Steel Construction		X
Factory Mounted Direct Drive Fans with Outlet Hood and Birdscreen with NEMA Premium [®] * Efficient Motor		X
High Performance Fan Silencer		X
Slide Gate Fan Damper		X
Shaving Control System (SCS)		X
Bags & Cages		
Dura-Life™ Twice the Life Polyester Bags	X	
Stainless Steel Bag Clamps	X	
Galvanized Cages	X	
Variety of Bag Media Options		X
Paint System		
Prime Coated Interior	X	
Durable Industrial Finish Exterior	X	
Standard Colors: Torit Blue or Storm White	X	
Custom Colors		X

* All 60 Hz motors 1 HP and above are EISA compliant and considered NEMA Premium[®] per Table 12-12. NEMA Premium is a registered trademark of National Electrical Manufacturers Association.

** Magnehelic and Photohelic are registered trademarks of Dwyer Instruments, Inc.

Hopper Design (Not available on Bin Vent)	Std	Opt
60° Hoppers	X	
Flanged Dirty Air Inlet	X	
Inlet Deflector	X	
Flanged Hopper Discharge	X	
Hopper Access Panel	X	
Coupling for High Level Indicator	X	
High Level Indicator		X
Hopper Discharge (Not available on Bin Vent)		
Dumpster Discharge with Pneumatic Lid and Controls		X
Rack and Pinion Gate		X
55-Gallon (208.2-Liter) Drum Cover		X
Various Rotary Valve Options		X
Support Structure (Not available on Bin Vent)		
36" (914.4 mm) Clearance Leg Pack	X	
Custom Clearance Leg Packs		X
Electrical Controls, Gauges & Enclosures		
Goyen Diaphragm Valves	X	
120V Timerboard and Solenoid Valves in NEMA 4 Enclosure	X	
Magnehelic ^{®**} Gauge	X	
Photohelic ^{®**} Gauge		X
Photohelic Gauge (Weatherproof)		X
Delta P Control Panel without Timer		X
Safety Features		
4"x4" (101.6 x 101.6 mm) Bag Safety Grid (bin vent units only)	X	
Sprinkler Access Ports		X
Sprinkler Pack Assembly		X
Explosion Vents		X
Warranty		
10-Year Warranty	X	

Significantly improve the performance of your collector with genuine Donaldson Torit replacement filters and parts. **Call Donaldson Torit today 800-365-1331.**



Tel 800-365-1331 (USA)
Tel 800-343-3639 (within Mexico)

donaldsontorit@donaldson.com
donaldsontorit.com

Donaldson Company, Inc.
Torit
P.O. Box 1299
Minneapolis, MN
55440-1299 U.S.A.

EXACTLY WHAT YOU NEED.™

FS Pulse Jet Baghouse & Bin Vents (09/12)
© 2008 Donaldson Co., Inc. All Rights Reserved. All products, product specifications, and data (airflow, capacity, dimensions, or availability) are subject to change without notice, and may vary by region or country. Donaldson Torit is a registered trademark of Donaldson Company, Inc. Contains Donaldson proprietary technology.